

# Feathering Out of Tolerance Tops

---

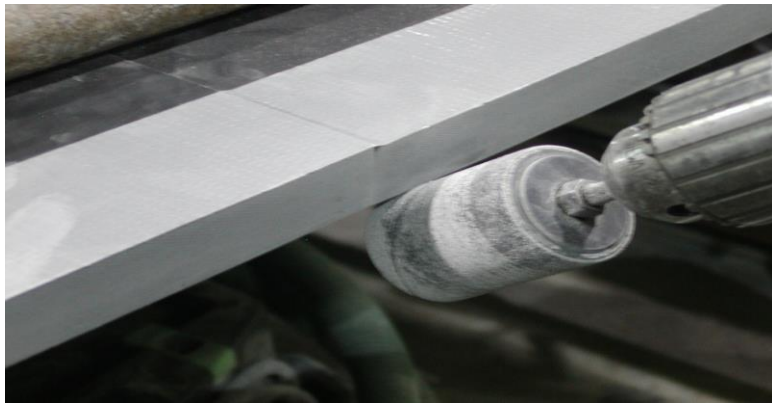
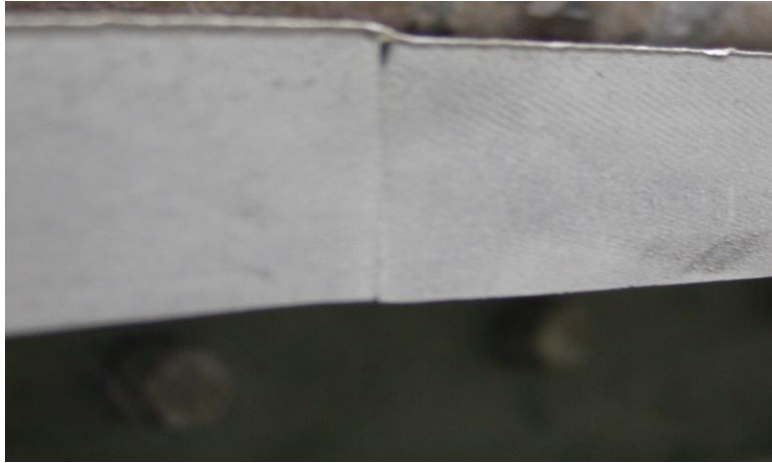
## Equipment needed

- Electric or Cordless drill
- Mandrill
- 100 grit sanding drums.





- 
- If piece arrives out of tolerance the piece can be sanded down using a drill, mandrill and 100 grit sanding drums. The mandrill and sanding drums can be provided through Durcon.



- 
- **After the out of tolerance piece has been sanded down be sure to break the bottom edge typically .09 to 1/8 edge break.**