

Procedure for Cutting top at job site and refinishing edge



Tools and accessories needed

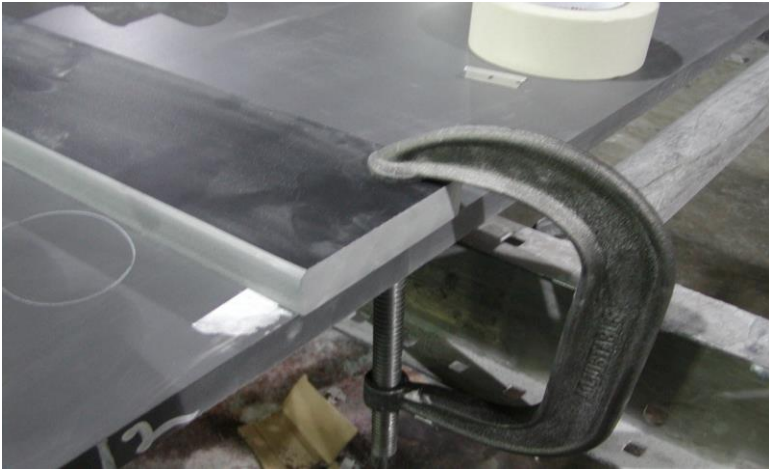
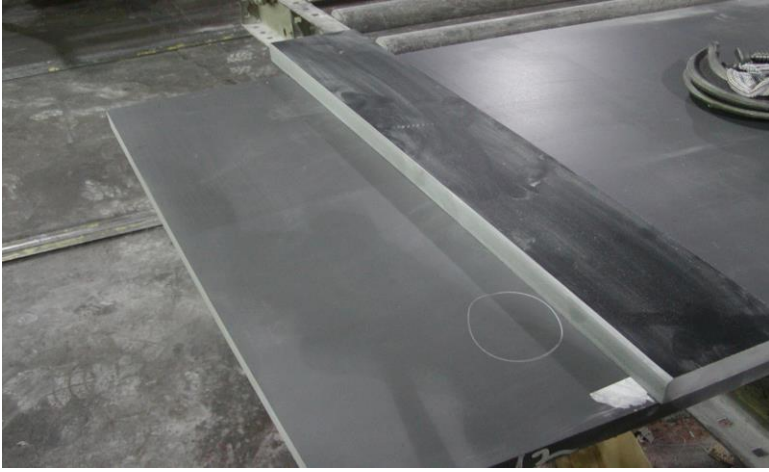
- 15- Amp 7-1/4 in. Circular Saw
- Dry-cutting Diamond Circular Saw Blade
- 2 C-Clamps
- Belt Sander
- 100 Grit Sanding Belts
- Straight board or piece of back splash to use as a guide while cutting

- Measure Length of piece before cutting piece down to actual size



- Then measure the inside of your blade to the edge of the saw plate that will be running against your fence or guide. After this dimension has been determined then subtract that amount plus the amount that will need to be cut off from the length of your top. Example the dimension from blade to outside dimension of plate is 5.62 and the amount to be cut off of the piece will be 2.00" the overall measurement will be 7.62".

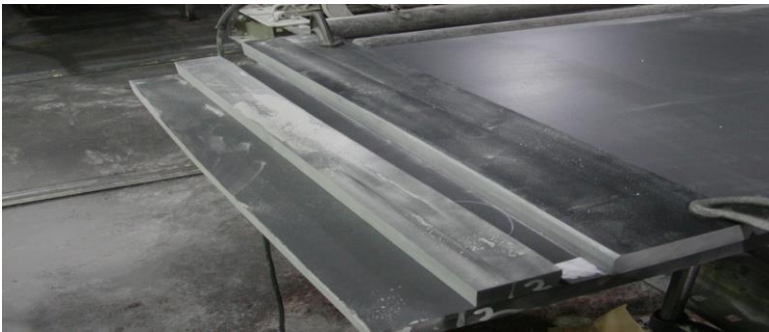
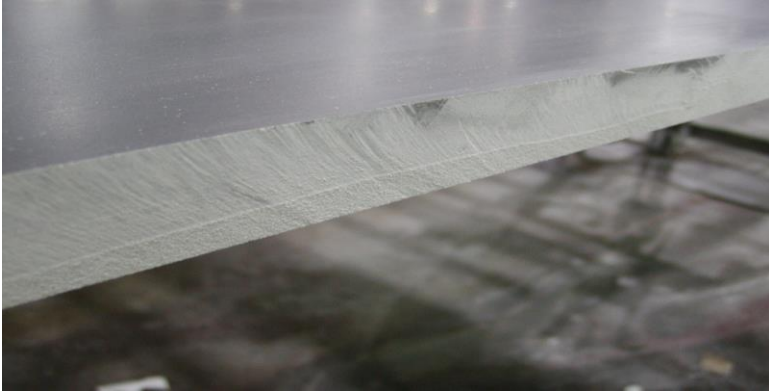




-
- Mark 7.62” and place the piece of material that will be used for your fence on the mark then clamp fence down.



-
- Be sure to put some tape on the surface of the top to avoid any scratching .Then proceed in cutting the piece.



-
- Once piece has been cut remove C-clamps and finish cut edge with belt sander to remove all the saw marks if needed.



-
- If a bevel finish is required place the belt sander flat against the edge of the top and remove all saw marks. Then place the belt sander at an angle to apply the bevel be sure not to apply too much pressure when making the bevel because it may cause the belt to dig into the material when finished repeat the process on the bottom also. The bevel should be 1/8" when completed.

- Once piece is finished the edge can then be painted.

