

How to Cut an Epoxy Resin Countertop

An epoxy resin countertop is durable and inexpensive. Cutting through this kind of counter is slightly tricky because it is necessary to cut through the resin slowly enough so that you do not crack the remaining resin or damage any other part of the counter. Since resin is so hard, a diamond cutting blade and drill are necessary to cut cleanly through the countertop.

Things You'll Need

- Measuring tape
- Ruler
- Drill
- Eye protection
- Ear protection
- Dust mask
- 1/4-inch diamond drill bit
- 2-inch hole saw
- Circular saw
- Diamond saw blade
- Soft cloths
- Resin sealer
- Paintbrush

Instructions

- 1 Determine where you need to make the cut on the counter. You may have to cut the counter during installation to make it fit in a particular area or you may need to cut out a shape for a sink or stovetop that you will install over the countertop.
- 2 Draw the outline of the cut that you intend to make with a pencil. Use a straight ruler to help you draw crisp and steady lines.
- 3 Put on ear protection, eye protection and a dust mask. Drill through the corners of the outline with a 1/4-inch diamond drill bit. Use the 2-inch hole saw to enlarge the small holes to 2 inches in diameter.
- 4 Adjust the saw so that it will make a 1/8-inch deep cut. Saw 1/8 inch deep along the cutting lines on the top of the countertop. Set the blade to saw at 1/4 inch. Saw along the cutting lines again. Set the saw to cut 1/8th inch deeper than the 1/4 inch measurement. Cut the lines again. Continue to increase the depth of the cut each time by about 1/8 inch until the

counter is cut all the way through. Cutting a small amount at a time prevents the counter from cracking.

- **5**
Clear away all dust from the area. Use a dry rag first, then wipe away any remaining dust with a damp rag.
- **6**
Brush some resin sealer onto the exposed areas of the countertop. This will seal the resin and prevent further damage. Allow the sealer to dry for 24 hours.

Edge Sanding & Edge Painting



Sand the edge using a Porter Cable/Belt Sander and 100 grit sand belts. Be sure to wear dust mask when sanding.

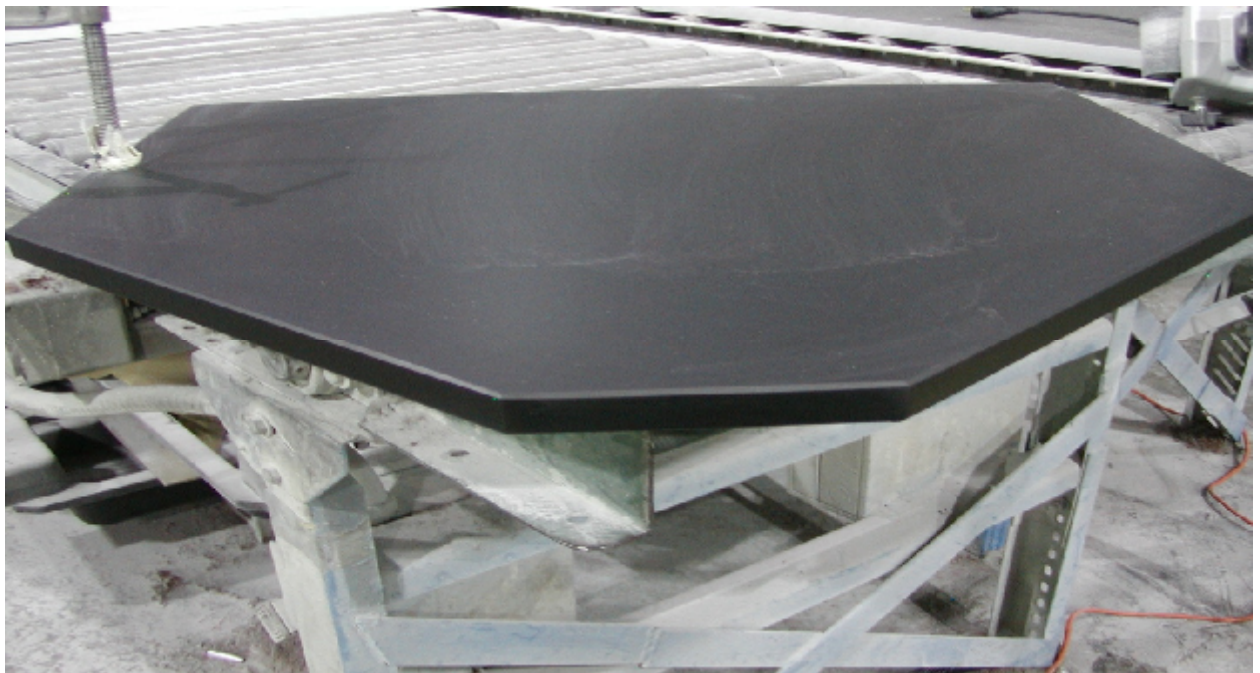


After sanding the edge tilt the sander and break the bottom edge usually 1/8" edge break. Than repeat the process on the top edge. Be sure not to apply to much pressure or the belt may dig into the material.





Then after the edge has been sanded proceed to paint the edges that have been sanded. Make sure you follow Epoxy Edge Paint Mixing Instructions below.





EPOXY EDGE PAINT MIXING INSTRUCTIONS

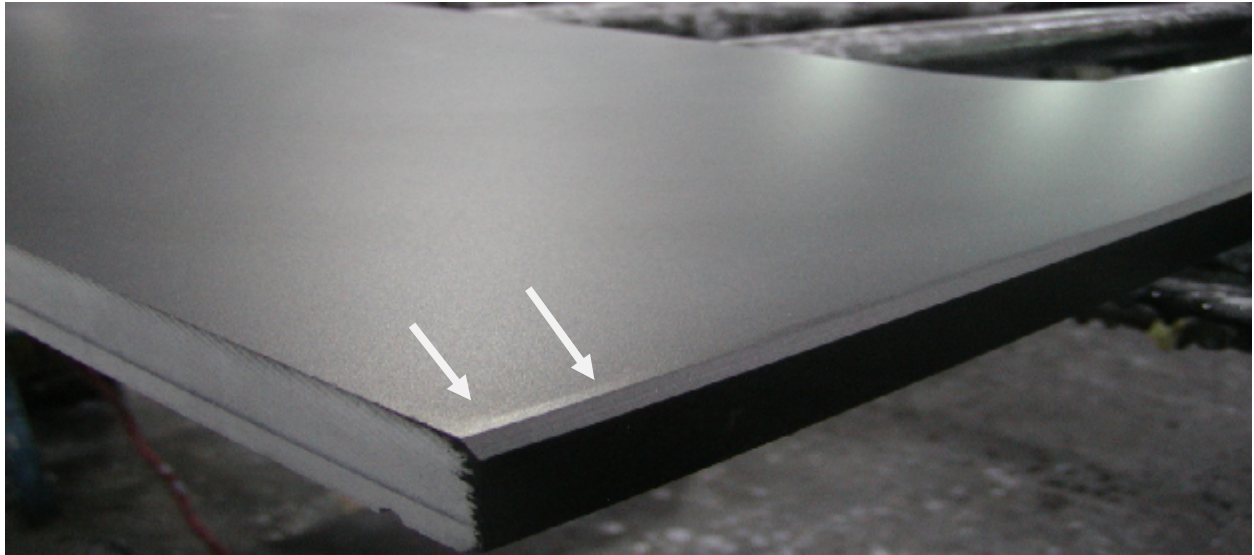
1. Pour the Resin (Part A) into quart mix can
2. Pour the Catalyst (Part B) into the quart mix can
3. Using empty bottle, add 2 bottles of **LACQUER** thinner, purchased locally.
4. Add Pigment @ ~ 20% of total mixture and stir.
Example: 20% of 16 oz. ≈ 4 oz. of pigment
5. Mix well.

NOTE: Add/reduce lacquer thinner to extend/reduce pot life

APPLICATION

- Using the rags provided, apply mixture to edge to be painted with one of the rags.
- Immediately wipe off using a clean, dry rag.
- Paint only small sections at a time as painting larger sections may cause the paint to dry prior to wiping off the excess.
- Do not let the paint drip or set.
- Edge Paint is "Tack Free" after one hour.

No lacquer thinner should be applied by rag or other means to edge or cutout before applying the edge paint as this reduces performance of the epoxy edge paint



In most cases a small amount of paint will get on the surface of the counter top after painting the edge. Be sure to remove excess paint from top surface using a rag with lacquer thinner. In doing so be sure not **to** remove paint from beveled edge.

