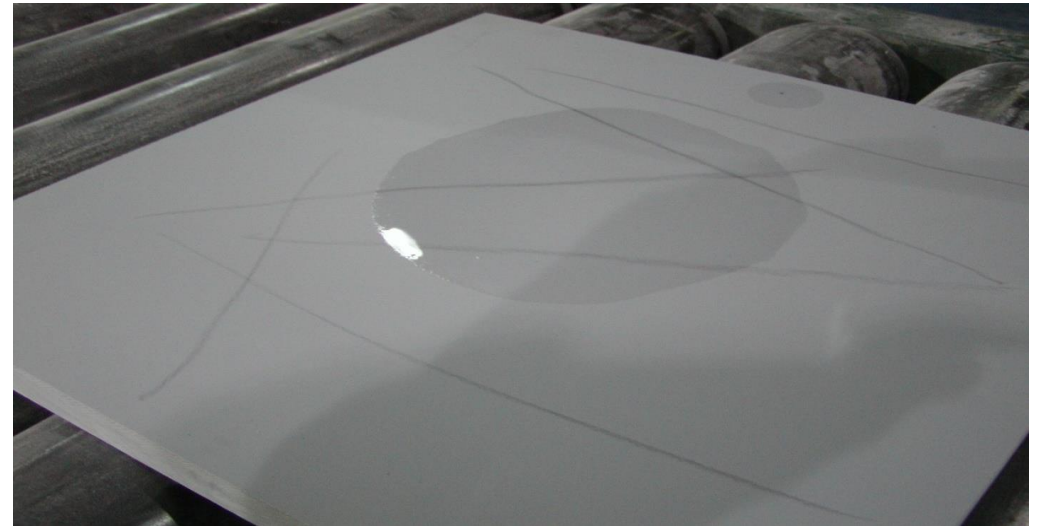
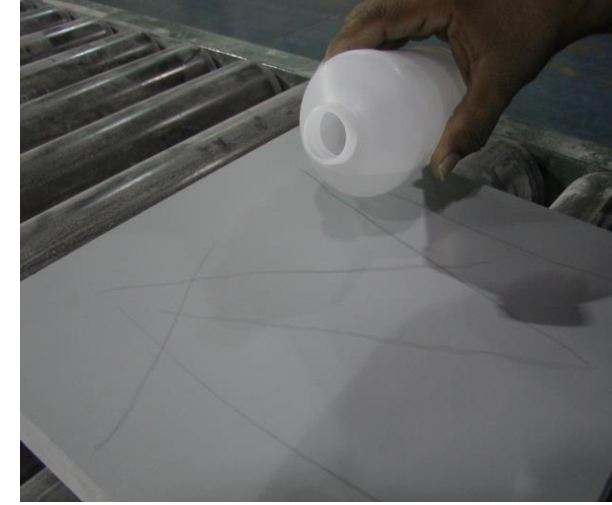
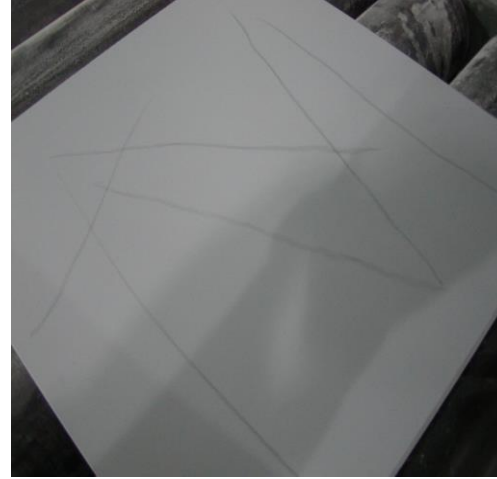
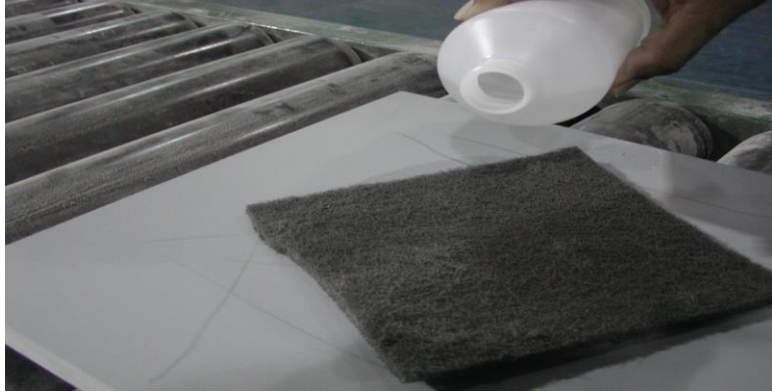


# Procedure for removing mars on Surface

---

- Pour lacquer thinner on surface.

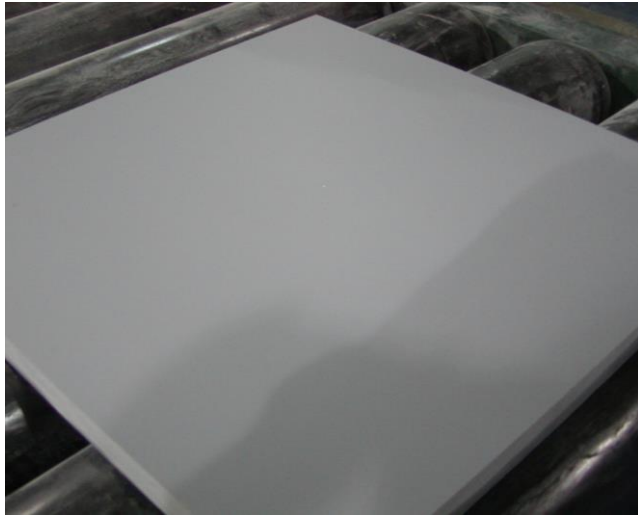




- Also pour lacquer thinner onto Gray Scotch Brite pad.

---

- Then lightly move the pad over the surface in a circular motion do not apply any pressure basically let the pad do the work. Any applied pressure will scratch the surface of the top.



- Then wipe the surface with a cloth to remove any excess lacquer thinner left on the surface.
- This application is for light colors only.