

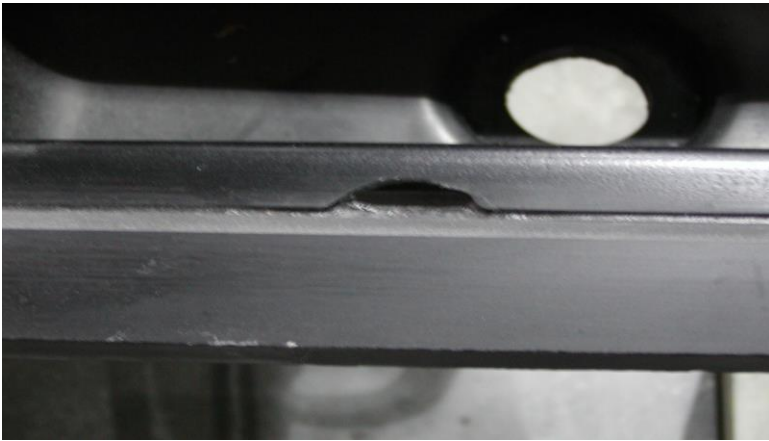
# Procedure on removing Drop in Sink

---

# Items required

- DEWALT Heat Gun
- 1-1/2 Putty Knife or Flat Head Screwdriver
- Rubber Hammer

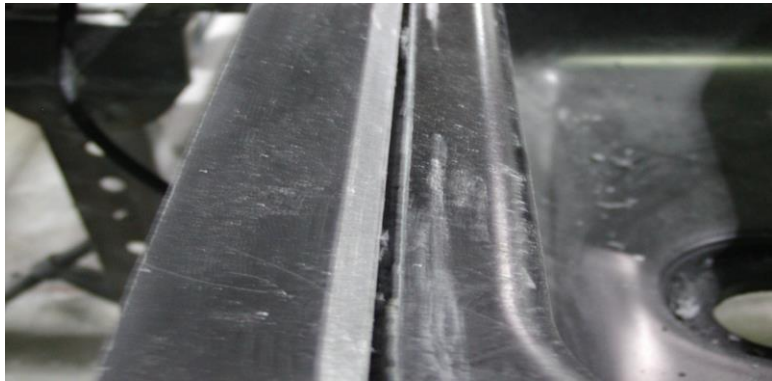




- 
- Notice sink was already chipped before starting procedure.

- **When starting use heat gun to apply heat to the adhesive between the cut out and the sink rim. Move heat gun back and forth to soften up the adhesive. You may want to just do a small area at a time 6" to 7".**





- 
- **As the adhesive begins to soften up start to remove it using a putty knife and rubber mallet.**

- Notice in most cases you will not have to dig out the entire amount of adhesive before the sink will break free from the cut out. Remove sink from cut out and clean left over adhesive from cut out.



- Any access Smooth-on can be removed using a heat gun and putty knife.

