

SOLICOR-CR

PRODUCT INFO

Table of Contents

002 Solicor-CR

003 Maintenance

004 Colors

The innovative Solicor-CR was developed in conjunction with Durcon parent company Wilsonart to give designers and builders what they have long asked for - a lightweight, easy to fabricate, chemical resistant worksurface that is the same color the entire way through.



SOLICOR-CR

Solicor-CR is a color-through, lab-grade worksurface solution perfectly suited for both vertical and horizontal applications in environments where chemical resistance, durability and aesthetics are top priorities.

This includes laboratories at the K-12 and university education levels, research & development facilities for the government, medical and pharmaceutical industries, and other segments such as healthcare, hospitality and retail.

Applications

- Laboratories in K-12 & Universities
- R & D Facilities
- Healthcare & Hospitality
- Medical & Pharmaceutical

Key Features

- Color-through
- Lightweight
- Cost-effective
- Lab-ready & Ease of Install
- Impact, Moisture & Scratch Resistant
- Chemical Resistant
- Color-matches Durcon Epoxy, Greenstone & SPC

Thickness

- 0.375"
- 0.75"
- 0.5"
- 1.0"

Edge Finishes

- 1/8" Bevel
- 1/4" Radius
- Straight Edge

Sheet Size

5' x 10'

Maintenance

Solicor-CR has superior resistance to scratches, harsh chemicals, extreme temperatures and impact, making it ideal for horizontal and vertical laboratory applications. While extremely durable, a regimen of general maintenance is recommended in order to ensure surfaces remain safe and attractive.

How to Clean Solicor-CR

- Wipe down surface with a damp cloth and mild soap, followed by a wet cloth. Dry with a paper towel to prevent streaks.
- Wipe surface using a clean cloth and hot water. For persistent stains, a soft sponge or nylon brush and a non-abrasive household cleaning solution may be used.
- Apply a cleaning detergent to the stain and leave overnight, removing with a wet cloth the following day. If stain persists, a light-abrasive cleaning solution may be used with great care to not damage the surface.
- For residue such as wax or paraffin, use a plastic or wooden spatula to carefully remove the substance, and clean the remaining stain using a method described above.
- If the top is physically damaged, such as a scratch that penetrates the surface, we recommends replacing the top.

Maintenance

Solicor-CR has the same guidelines as epoxy resin when it comes to avoiding certain materials and objects in its care regime to prolong surface's look and attractiveness in your lab or work space.

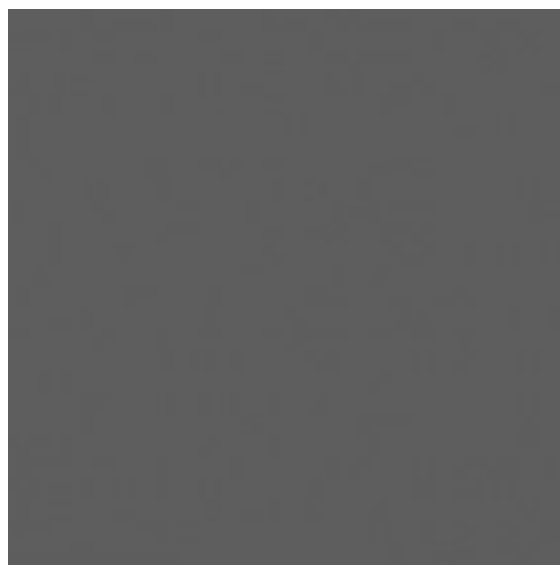
What To Avoid

- Abrasives including harsh sponges, pads, powders, and liquids
- Do not use sharp objects on epoxy resin surfaces, and avoid dragging heavy equipment
- Do not use wax or polishes containing wax
- Wipe up spills immediately to avoid staining, corrosion, and drying

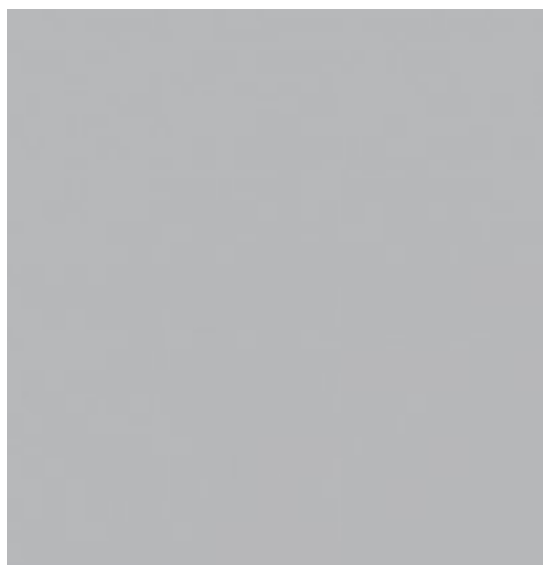
Materials Comparison

Material	Chemical Resistance	Heat & Fire Resistance	Moisture Resistance	Impact & Scratch	Lab Durability
Solicor-CR	✓	✓	✓	✓	✓
Solicor Standard	—	—	✓	—	—
SPC-CR	✓	—	✓	✓	✓
SPC Standard	—	—	✓	—	—
Solid Surface	—	✗	✓	✗	—
High Pressure Laminate [HPL]	—	✗	✗	—	✗

Colors



Graphite



Gray

Solicor-CR Color Information

The Solicor-CR initial color offering included Graphite and Gray, both created specifically to match the Graphite and Gray seen on the full family of lab-ready materials. This opens up a new world of laboratory design, with color-matched surfaces in all of the following product lines:

Epoxy Resin - Greenstone - Solid Phenolic Compact (SPC) - Solicor-CR

Thank You

Give us a call at (866) 456-1185 for help
selecting the right materials for your project.

Price Match | Short Lead Times | Fast Quotes